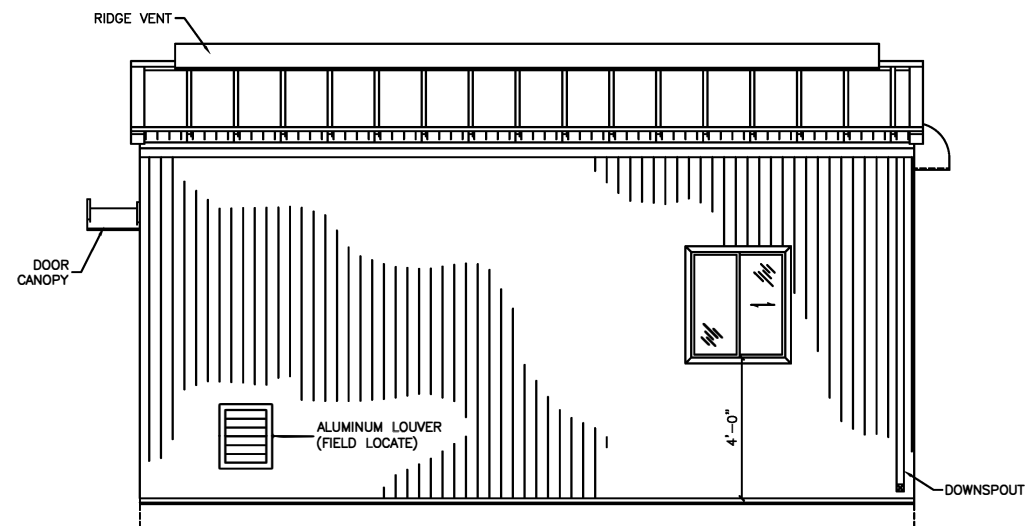
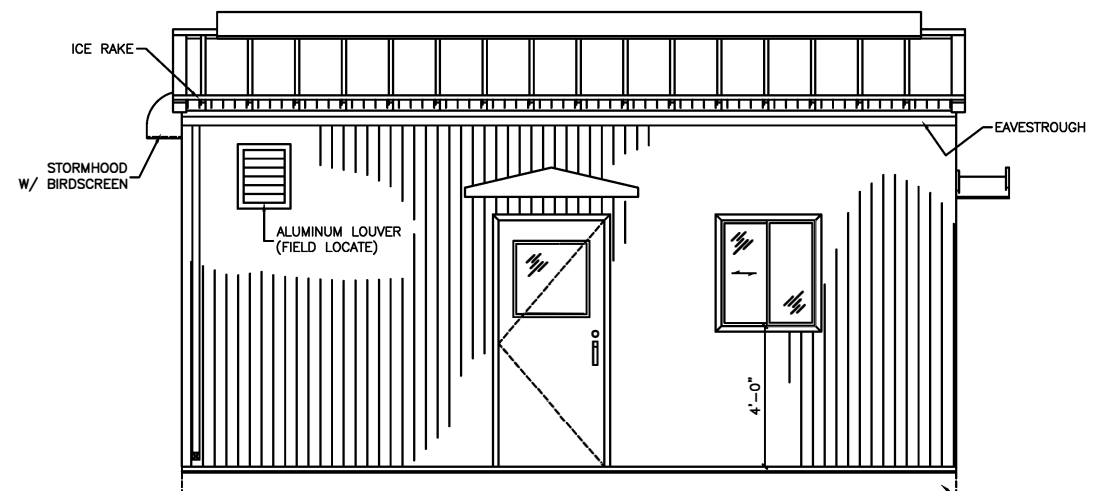


FLOOR PLAN VIEW

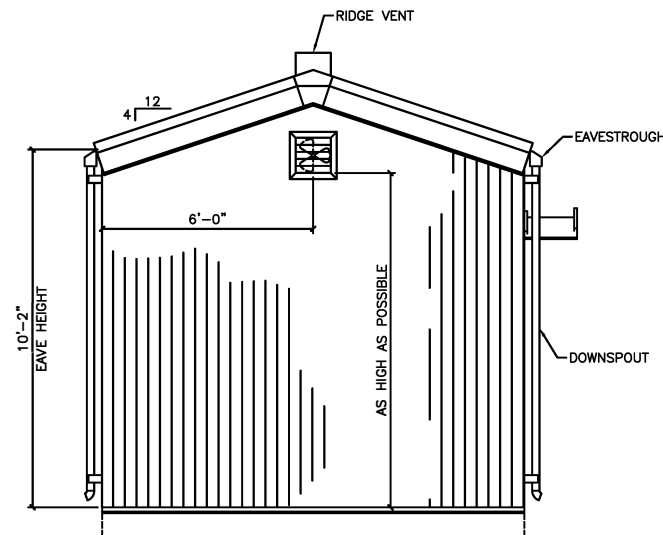


NORTH ELEVATION

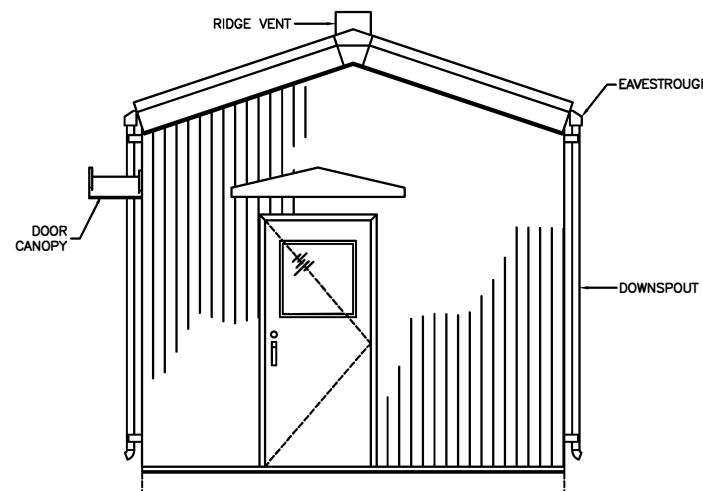


SOUTH ELEVATION

SKID BASE
(NOT BY ALMAC)



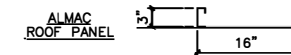
WEST ELEVATION



EAST ELEVATION

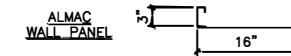
ROOF CONSTRUCTION:

- 22 GA. PREPAINTED STEEL INTERLOCKING STRUCTURAL RIB ROOF PANELS. 8000 SERIES PAINT SYSTEM TO COLOUR: STONE GREY (QC-305)
- STEEL INSULATION RIBS AT ROOF PANEL JOINTS.
- R12 (3") FIBREGLASS BATT INSULATION.
- 4 MIL. POLY VAPOUR BARRIER.
- 24 GA. PREPAINTED ALUMINUM FLUTED PROFILE LINER PANELS, TO COLOUR: WHITE



WALL CONSTRUCTION:

- 22 GA. PREPAINTED STEEL INTERLOCKING STRUCTURAL RIB WALL PANELS. 8000 SERIES PAINT SYSTEM TO COLOUR: STONE GREY (QC-305)
- R12 (3") FIBREGLASS BATT INSULATION.
- 4 MIL. POLY VAPOUR BARRIER.
- 24 GA. PREPAINTED ALUMINUM FLUTED PROFILE LINER PANELS, TO COLOUR: WHITE



TRIM COLOURS:

- GABLE FLASHING AND ALL NOTED FLASHINGS TO BE FORMED FROM PREPAINTED STEEL MATERIAL, TO COLOUR: HERON BLUE (QC-330)

ACCESSORIES:

- (A) TWO ONLY 3'-0" x 7'-0" STEEL INSULATED EXTERIOR WALK-IN DOORS C/W HARDWARE AS FOLLOWS:
 - *DOOR LEAF-20 GA. STEEL 45mm THK HONEYCOMB CORE (R4)
 - *DOOR FRAME-16 GA. PRESSED STEEL
 - *BUTT HINGES
 - *PANIC HARDWARE-"VON DUPRIN" #44TP C/W LOCK CYLINDER
 - *WIRE GLASS-24" x 24" DOUBLE GLAZED (I.W.G.)
 - *THRESHOLD (ALUMINUM)
 - *CHECK CHAIN
 - *WEATHERSTRIP
 - *SWEEP
 - *SHEET METAL CANOPY, FINISH: HERON BLUE (QC-330)DOOR LEAF FINISH: HERON BLUE (QC-330)
DOOR FRAME FINISH: HERON BLUE (QC-330)
- (B) TWO ONLY 2'-8" x 3'-0" (NOM. SIZE), DOUBLE GLAZED ALUMINUM SLIDING WINDOW C/W LOCK, FIBREGLASS CLOTH SCREEN AND PLAIN GLASS. FINISH: HERON BLUE (QC-330)
- (C) TWO ONLY 22'-0" LONG, CONTINUOUS EAVESTROUGHING C/W DOWNSPOUT ASSEMBLY. EAVESTROUGH FINISH: HERON BLUE (QC-330)
DOWNSPOUT FINISH: HERON BLUE (QC-330)
- (D) TWO ONLY 20'-0" LONG CONTINUOUS ROOF MOUNTED ICE RAKES. FINISH: TO MATCH ROOF PANELS.
- (E) TWO ONLY 1'-2" x 1'-6", STAMPED ALUMINUM WALL LOUVERS, C/W BIRDSCREEN AND INTERIOR SLIDE CLOSURES. FINISH: MILL FINISH ALUMINUM
- (G) ONE ONLY 20'-0" LONG CONTINUOUS RIDGE VENT ASSEMBLY, C/W 0'-6" THROAT, BIRDSCREEN AND MANUALLY OPERATED DAMPER. HOOD FINISH: STONE GREY (QC-305)
- (H) TWO ONLY WALL MOUNT EXPLOSION PROOF EXHAUST FANS, "ENERTECH" MODEL NO. ET-12-1, C/W 120V/60hz/1ph, 1/4hp MOTOR, SHUTTER, GUARDS AND STORM HOOD W/ BIRDSCREEN. HOOD FINISH: STONE GREY (QC-305)


BUILDING DESIGN LOADS (kPa)

GROUND SNOW LOAD - $S_s = 2.00$, $S_r = 0.10$

WIND LOAD $q_{1/30} = 0.44$

SEISMIC ZONE - $Z_a = 0.00$, $Z_v = 1.00$, $V = 0.05$

REV.	DESCRIPTION	BY	DATE
1	ISSUED AS-BUILT	TR	2004/12/03

		Almac Metal Industries Ltd.	
6140-78th AVENUE EDMONTON, ALBERTA T6B 0A8		PHONE: (780) 465-0881 FAX: (780) 465-4198	
CLIENT:	PRESSON ENERFLEX MANUFACTURING	DRAWN BY:	TR
TITLE:		CHECKED BY:	
LOCATION:		SCALE:	3/16"=1'-0"
SHEET DESCRIPTION:	PLAN AND ELEVATION VIEWS	DATE:	2004/12/03
		JOB NUMBER	
		SHEET	
		REV.	0